

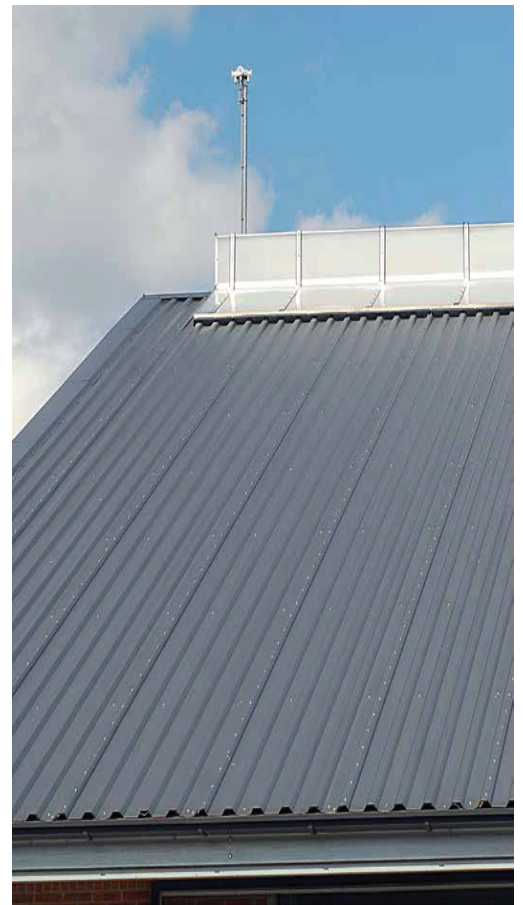
Features

Core thickness (mm)	Total height (mm)	U-value (W/m ² .K)	R-value (h.ft ² .°F / BTU)	Weight (kg/m ²)*
40 mm	75 mm	0.41	13.74	10.50
60 mm	95 mm	0.29	19.37	11.30
80 mm	115 mm	0.23	25.01	12.10

(*) Based upon an external sheet thickness of 0.5 mm and internal sheet thickness of 0.4 mm.

Standard Configuration

Cover width:	1000 mm
C.t.c crowns:	200 mm
Profile height:	35 mm
Minimum roof slope:	4°
Core material:	Polyisocyanurate insulation
Endlap:	Available with or without endlap
Direction of lay:	Available left and right
Coatings:	External: Colorcoat Prisma or HPS200 Ultra Internal: Polyester
Colours:	According to our colour charts
Minimum length:	2500 mm (shorter available on request)
Maximum length:	11938 mm



The FALK Roof/Wall 1000 TR is certified by QAI Laboratories Ltd. (QAI) for ASTM E72, ASTM E330, ASTM E331, ASTM E283, ASTM E84, ASTM C1363, ASTM C518, CAN/ULC S101, CAN/ULC S102, CAN/ULC S127 and CAN/ULC S138. QAI is a Standards Council of Canada and International Accreditation Service, Inc. accredited Product Certification Agency, Inspection Agency and Testing Laboratory for Insulated Metal Panel products and evaluation for structural, durability and fire resistance behaviour. Results have been published and can be viewed in the QAI Listing Directory.



The 1000 TR as manufactured by Falk Bouwssystemen BV, is FM Approved for 4471, 4880 and 4881 classes. Please contact Falk Panels Canada Ltd. for approved installation requirements.

WWW.FALKPANELS.CA

Data provided within this document is for general information purposes only. Falk Panels Canada Ltd. accepts no liability for the contents of this information or for the manner in which it is utilized. Falk Panels Canada Ltd. reserves the right to revise, update and remove data as required.