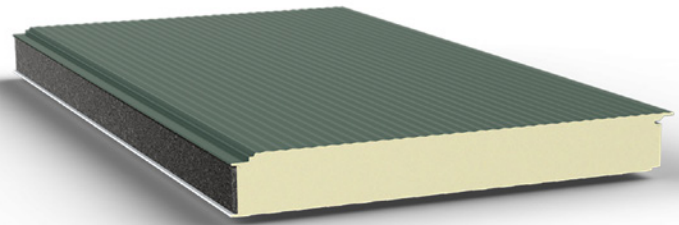
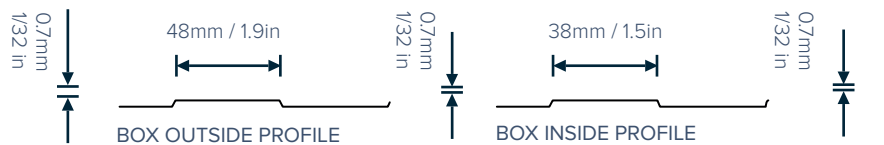
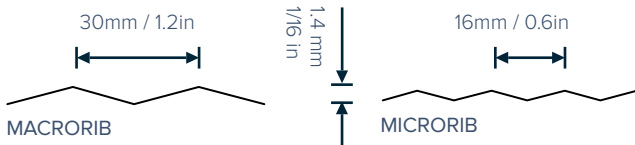
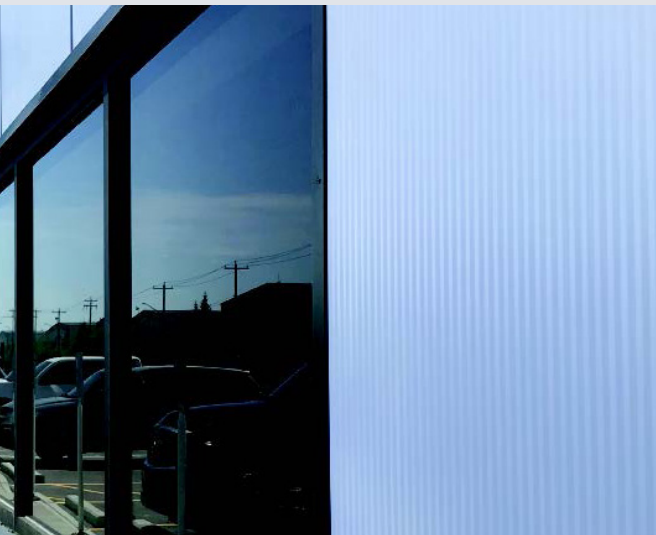




FALK WALL 1060-WB

The FALK wall panel 1060 WB consists of two profiled steel facings, bonded with a high-insulating PIR foam core. The external sheet can be supplied with microrib, macrorib or box profiling and the internal is supplied with box profiling. The panel has a hidden fastener system so the fasteners will not be visible after installation. The panel can be installed horizontally or vertically. With the use of modern colours and high quality,

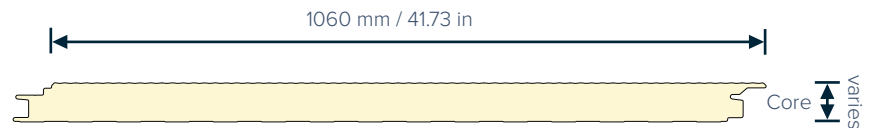


PRODUCT SPECIFICATIONS

CORE THICKNESS	R-VALUE* (h.ft ² .°F/BTU)	U-VALUE (SI)* [W/(m ² .K)]
60 mm / 2.36 in	16.67	0.37
80 mm / 3.15 in	22.22	0.28
100 mm / 3.94 in	27.78	0.22
120 mm / 4.72 in	33.34	0.18

*Tested at 4°C / 40°F mean temperature.

COVER WIDTH:	1060 mm / 41.73 in
CORE MATERIAL:	Polyisocyanurate insulation
ORIENTATION:	Vertical or horizontal
COATINGS:	External: Colorcoat Prisma or HPS200 Ultra Internal: Polyester
GAUGE:	Exterior: 24, 26 ga Interior: 26 ga
PROFILING:	External: Macro, Micro or Box profile Internal: Box Profile
COLOURS:	According to our colour charts See: falkpanels.ca/charts
MINIMUM LENGTH:	2500 mm / 8' - 2" (shorter lengths available on request)
MAXIMUM LENGTH:	11938 mm / 39'-2", longer lengths available* *special transportation arrangements for longer lengths as required.



WWW.FALKPANELS.CA