

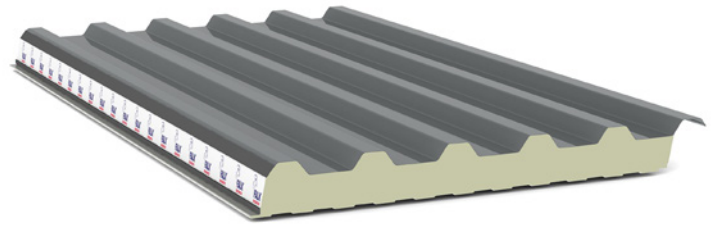


## FALK ROOF / WALL 1000-TR

The FALK 1000 TR panel is a robust panel with a high-insulating PIR foam core. Due to the 5 wide trapezoidal crowns this product is suitable for large spans and has excellent insulation properties. This product is supplied with a double sealant, both at the inside and outside. Heat loss and condensation problems will be a thing of the past.



FOOD SAFE    AGRI-COATING    EKO    SUITABLE    SEAL    ROOF    EXTERIOR WALL



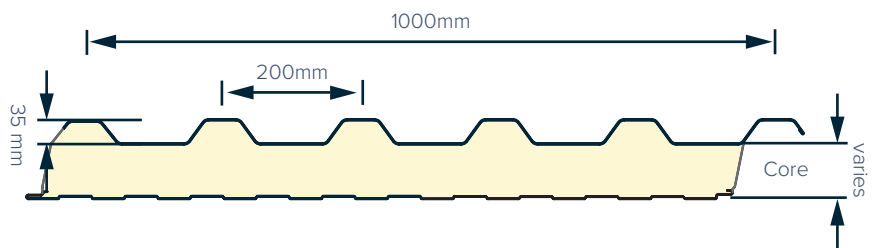
### PRODUCT SPECIFICATIONS

CORE THICKNESS	R-VALUE* (h.ft <sup>2</sup> .°F/BTU)	U-VALUE (SI)* [W/(m <sup>2</sup> .K)]
40 mm / 1.57 in	14.58	0.390
60 mm / 2.36 in	20.21	0.281
80 mm / 3.15 in	25.8	0.220

\*Tested at 4°C / 40°F mean temperature.

COVER WIDTH:	1000 mm / 39.4 in
C.T.C CROWNS <sup>1</sup> :	200 mm / 7.9 in
PROFILE HEIGHT:	35 mm / 1.4 in
MINIMUM ROOF SLOPE:	1:12 or 4°
CORE MATERIAL:	Polyisocyanurate insulation
ENDLAP:	Available with or without endlap
GAUGE:	Exterior: 24, 26 ga Interior: 26 ga
DIRECTION OF LAY:	Available left or right
COATINGS:	External: Colorcoat Prisma or Colorcoat HPS200 ULTRA® Internal: Polyester
COLOURS:	According to our colour charts See: <a href="http://falkpanels.ca/charts">falkpanels.ca/charts</a>
MINIMUM LENGTH:	2500 mm / 8'-2", shorter lengths available on request
MAXIMUM LENGTH:	11938 mm / 39' - 2"

<sup>1</sup>C.T.C = Center to Center



[WWW.FALKPANELS.CA](http://WWW.FALKPANELS.CA)