

# WeatherXL™ Coil Coating System

Silicone Modified Polyester (SMP)

Sherwin-Williams® WeatherXL coating is a unique silicone-modified polyester (SMP) resin system for pre-painted metal products designed especially for the residential, agricultural and commercial construction industry.

## Durable & Long-Lasting

This two-coat system has proven durability and is highly resistant to stains, abrasions and metal markings. These outstanding features allow the product to endure the physical stresses of fabrication, transit and construction while minimizing cracking and marring.

The combination of ceramic, inorganic pigments and other enhancements make WeatherXL the most durable SMP coatings on the market. WeatherXL is recognized for its superior weatherability, remarkable color and gloss retention, outstanding color consistency, proven durability, as well as superior chalk resistance.

WeatherXL coatings are available in a wide pallet of colors from bright white to jet black, all of which are available in Solar Reflective (SR) formulations to meet LEED qualifications, which means while looking beautiful, you also save energy and cooling costs.



SHERWIN-WILLIAMS  
Coil Coatings

WeatherXL

### ● Category 2 - Premium

Please be advised that category 2 items are considered non-standard items with limited availability and extended lead times. Color requests not listed are considered custom requests involving special approval and quantity minimums.

### ● Customer Acknowledgment

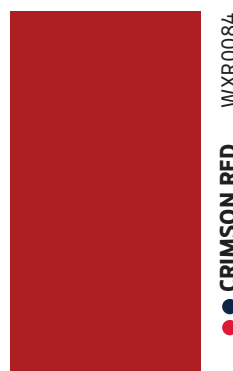
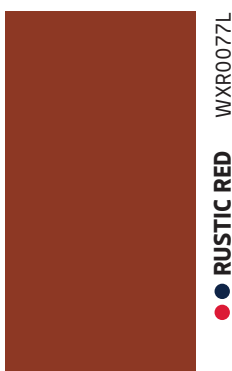
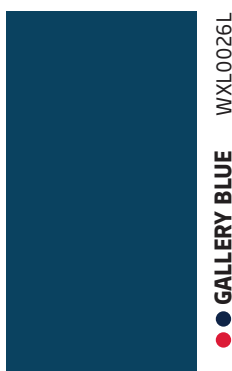
Please be advised that darker shades of WeatherXL Silicone Modified Polyester (SMP) will require a customer acknowledgment form to be completed. Failure to do so, may result in no guarantee being provided for the coating's performance.

## ■ PolyPREMIER™ Polyester (PE) Coil Coating System

PolyPREMIER, by Sherwin-Williams Coil Coatings, is a line of multi-purpose polyester coatings formulated specifically for metal building and multi-purpose product components. We understand that every business and product has varied coating requirements, which is why we work directly with our customers. With a commitment to know your business as well as you do, we deliver solutions specifically for optimizing your product needs. Enhance your next project with solutions from the PolyPREMIER™ line products.

FALK Panel provides a range of finished profiles in the Fluoropon® 70% PVDF colors depicted. For a more accurate representation of our colors, please request a physical color sample by calling FALK at 616.541.4500 or visit falkpanel.com

*\*Please note that when sharing the color code with a Sherwin-Williams paint stores associate, mention that the color is stored in Sher-Color™'s Competitive Color Palette database.*



BRIGHT WHITE  
WXW0050L  
PMW0864 (PE)

IGLOO WHITE  
PMW0532 (PE)

DUTCH WHITE ●● WXW0704L  
PMW33644 (PE)

LIGHT STONE ●● WXD0038L

SADDLE TAN ●● WXD0046L

DESERT SAND ●● WXD0055L

OLD TOWN GRAY ●● WXA0095L

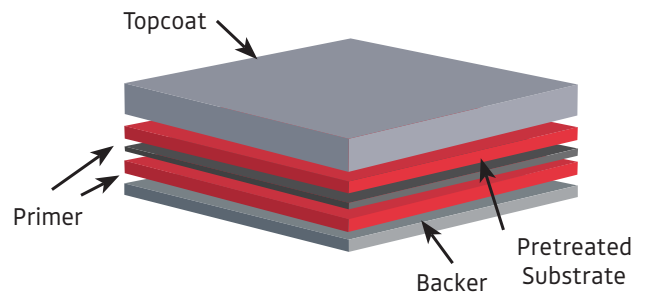
BURNISHED SLATE ●● WXB1007L

CHARCOAL ●● WXA0090L

BLACK (Trim Only) ●● WXA0107L

# COMMITMENT TO QUALITY

Our coatings are trusted and field-proven through rigorous testing, providing key benefits to our customers.



## SMP COIL COATING SYSTEM

Number of Coats	Dry Film Thickness (DFT)		Total Topside DFT:	Backer
	Primer	Topcoat		
2-Coat	0.2-0.3 mils	0.7-0.8 mils	0.9-1.1 mils	0.2-0.3 mils

## WEATHERXL AND WEATHERXL CRINKLE FINISH PERFORMANCE TESTING

Industry Specifications Compliance	AAMA 2604-17A Requirements	Voluntary Specification, Performance Requirements and Test Procedures for High-Performing Organic Coatings on Architectural Aluminum Extrusions and Panels
Substrates	Pretreated Galvalume, Hot-Dipped Galvanized (HDG) steel and aluminum	

## PHYSICAL TESTING

### ASTM<sup>1</sup> TEST METHOD

### AAMA<sup>2</sup> 2604-17A REQUIRED TEST RESULT

Falling Sand Abrasion	ASTM D 968	35 ± 10 liters
Film Adhesion	ASTM D 3359	No removal of film under tape in the cross-hatched area. (Dry, Wet, Boiling Water)
Surface Burning Characteristics	ASTM E 84	<b>Flame Spread Index:</b> Class A. <b>Smoke Developed Index:</b> Class A.
Graffiti Resistance	ASTM D 6578/D 6578M	Meets and exceeds
Humidity Resistance	ASTM D 2247: 100% RH at 100° F for 2,000 hours	<b>Galvalume or HDG:</b> No field blisters <b>Aluminum:</b> No field blisters
Impact Resistance (direct)	ASTM D 2794	<b>Galvalume or HDG:</b> 3x metal thickness inch-pound, no loss of adhesion
Pencil Hardness	ASTM D 3363	HB to 2H.
Salt Spray	ASTM B 117: 1,000 Hours; 3,000 Hours	<b>Galvalume or HDG:</b> Creep from scribe ≤ 1/8" (3mm), none or few #8 blisters. <b>Aluminum:</b> Creep from scribe ≤ 1/8" (3mm), few #8 blisters.
Specular Gloss 60°	ASTM D 523	<b>WeatherXL:</b> 20-80 <b>WeatherXL Crinkle Finish:</b> <5 @ 60 degrees
T-Bends	ASTM D 4145 <sup>3</sup>	2T-4T, no loss of adhesion.

## SOUTH FLORIDA TESTING

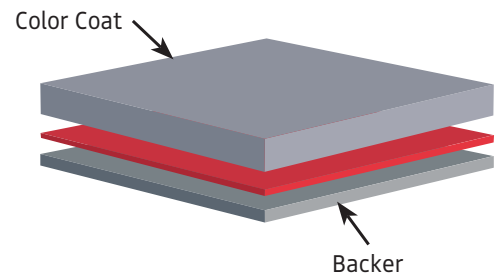
45 degree southern exposure for panel racking

Color	ASTM D 2244	No more than 5Δ E Hunter units at 90° vertical angle and 6Δ E non-vertical at 20 years.
Chalk	ASTM D 4214	Rating no less than 8 at 90° angle and 7 at non-vertical angle at 20 years.
Film Integrity	ASTM G 7	25 years, no blisters, peeling or cracking

<sup>1</sup>American Architectural Manufacturers Association. <sup>2</sup>American Society for Testing and Materials. WeatherXL is not designed to bridge cracks in the substrate. WeatherXL coatings will generally meet the requirements for most post-painted fabrication processes. However, variations in metal quality, thickness or cleaning/pretreatment applications can lead to diminished flexibility. For details and health, safety and handling information, Material Safety Data Sheets (MSDS) are available at coil.sherwin.com. Sherwin-Williams® and WeatherXL™ are trademarks of SWIMC LLC. Galvalume® is a registered trademark of BIEC International, Inc. Sherwin-Williams makes no warranties, expressed or implied, and disclaims all implied warranties including warranties of merchantability or fitness for a particular use. Sherwin-Williams will not be liable for any special, incidental or consequential damages. © 2023 Sherwin-Williams. All Rights Reserved.

# COMMITMENT TO QUALITY

Our coatings are trusted and field-proven through rigorous testing, providing key benefits to our customers.



## PE COIL COATING SYSTEM

COATING SYSTEM	Number of Coats	Dry Film Thickness (DFT)			Total Topside DFT:	Primer (optional)	Backer*
		Clearcoat (optional)	Color Coat/ Basecoat	Primer (optional)			
POLYPREMIER	1-, 2-, or 3-coats	0.35-0.45 mils	0.50-0.85 mils	0.15-0.40 mils	0.65-1.55 mils	0.30-0.40 mils	0.15-0.40 mils

\*A backer is dependent on the application and gloss level.

## PHYSICAL TESTING

### ASTM<sup>1</sup> TEST METHOD

### AAMA 2603-17A REQUIRED TEST RESULT

Abrasion Resistance	ASTM D968, Method A	Total Sand = 35 ± 5 liters
Cross Hatch Adhesion	ASTM D3359	No loss of adhesion between coating and substrate to point of metal rupture with 1/8" cross hatch scribe pattern through coating to bare metal
Film Adhesion	ASTM D3359	No removal of film under tape in cross-hatched area
Graffiti Resistance	ASTM D 6578/D 6578M	Meets and exceeds
Humidity Resistance	ASTM D 2247: 100% RH for 2,000 hours	<b>2,000 hours:</b> No blistering or loss of adhesion
Impact Resistance	ASTM D 2794	<b>Aluminum:</b> 1.5x metal thickness inch-pounds, no loss of adhesion. <b>CRS, HDG or Galvalume:</b> 3x metal thickness, no loss of adhesion.
Pencil Hardness	ASTM D 3363	F-2H
Salt Spray	ASTM B 117: 5% Salt Fog at 95°F for 250 hours 5% Salt Fog at 95°F for 1,000 hours	<b>CRS:</b> no field blistering, no more than 1/8" creep from the scribe <b>Aluminum:</b> No field blistering, no more than 1/32" creep from the scribe <b>HDG:</b> Creep from scribe ≤ 1/8" (3mm), few #8 blisters. Number of hours tested varies by substrate and/or primer selected.
Specular Gloss 60°	ASTM D 523	<b>PolyPREMIER:</b> 8-65 <b>Non-Fogging:</b> 25-80 <b>Mica/Metallic:</b> 15-85+, +/-5 units of manufacturer's specification <b>USDA:</b> 30-40
T-Bends	ASTM D 41453 ASTM D41455	<b>PolyPREMIER:</b> 0T-4T, no loss of adhesion, <b>USDA:</b> 2T-3T, no loss of adhesion, <b>Non-Fogging:</b> 0T-1T single coat or two coats on aluminum, <b>Texture:</b> 1T-2T, system flexibility varies with basecoat selection, <b>Mica/Metallic:</b> 0T-2T depending on resin system, with no loss of adhesion

<sup>1</sup>American Architectural Manufacturers Association; <sup>2</sup>American Society for Testing and Materials; <sup>3</sup>PolyPREMIER is not designed to bridge cracks in the substrate. PolyPREMIER coatings will generally meet the requirements for most post-painted fabrication processes. However, variations in metal quality, thickness or cleaning/pre-treatment applications can lead to diminished flexibility.

For details and health, safety and handling information, Material Safety Data Sheets (MSDS) are available at [coil.sherwin.com](http://coil.sherwin.com). Galvalume® is a registered trademark of BIEC International, Inc.

PolyPREMIER is a trademark of Sherwin-Williams.

SHERWIN-WILLIAMS MAKES NO WARRANTIES, EXPRESS OR IMPLIED, AND DISCLAIMS ALL IMPLIED WARRANTIES INCLUDING WARRANTIES OF MERCHANTABILITY OR FITNESS FOR

A PARTICULAR USE. SHERWIN-WILLIAMS WILL NOT BE LIABLE FOR ANY SPECIAL, INCIDENTAL OR CONSEQUENTIAL DAMAGES. © 2018 Sherwin-Williams All Rights Reserved.